

## GELM Annex by Díaz Paunetto Arquitectos

Architect Víctor Díaz Paunetto completed the renovation of an abandoned constructing into a college room, found in Corozal, Puerto Rico.







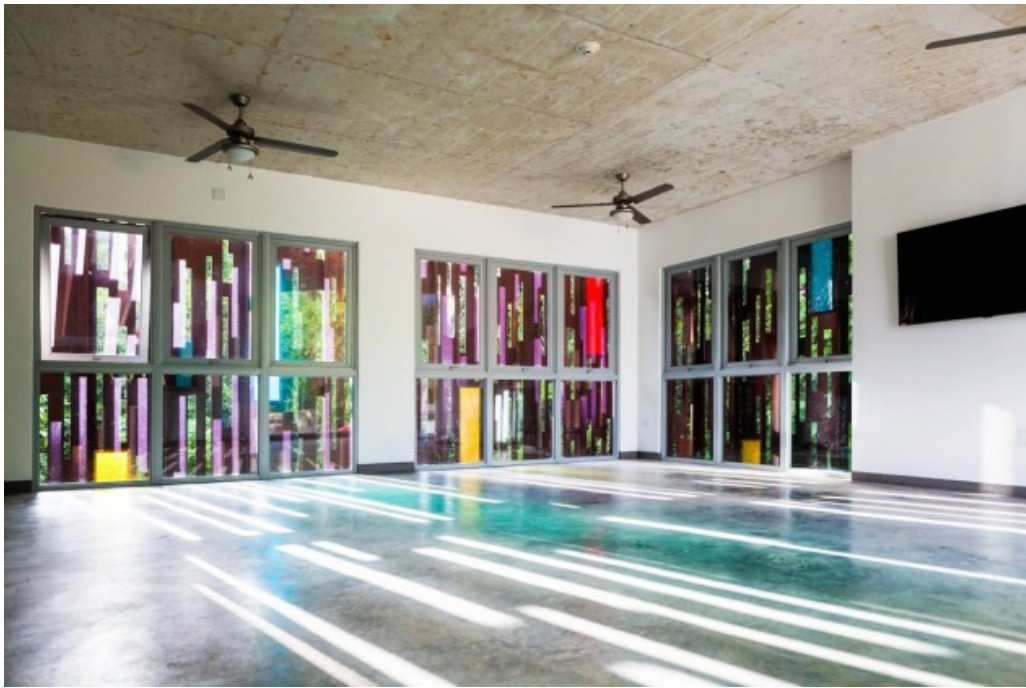












Before photo



## Undertaking description

*This task aspires to be an illustration of how the recycling of present structures can possibly serve as a automobile for a sustainable development of our developed setting.*

*The issues of demonstrating how adaptive reuse could be observed as a new model for redevelopment was intertwined with the difficulties of a designer also operating as the builder with an very limited price range and time for the execution of this venture.*

*GELM Annex is a second commission of the joint Early Head Start and Pre-College System of Guarderia Ecologica La Mina (GELM). The layout solution for the rehabilitation of this current framework dating back to the 1960's and abandoned given that the 1980's had to strive for simplicity, uniformity and longevity. To this effect a corten steel skin perforated in a pattern derived from the abundant and comprehensive bamboo hedges that surround the internet site was made in an energy to create a dialogue with the instant all-natural context. The skin gets to be a sunscreen and jointly with the colored glass panels, launched in reference to the existing pre-college the constructing serves, support bathe the interior room with filtered and colored light.*

Style: Víctor Díaz Paunetto AIA

## Posts related to GELM Annex by Díaz Paunetto Arquitectos

[Intriguing Snap-Together Marble Tables: Annex by Joe Doucet](#)

[Dream House : ABBOTSFORD EXTENSION by Chan Architecture](#)



Piampiano Residence by Studio B Architects



Brown Vujcich Home By Bossley Architects

