

Search this website...



Home » ARCHITECTURE » Adaptive reuse as a new model for redevelopment: GELM Annex by Díaz Paunetto Arquitectos



ADAPTIVE REUSE AS A NEW MODEL FOR REDEVELOPMENT: GELM ANNEX BY DÍAZ PAUNETTO ARQUITECTOS

POSTED ON OCT 7, 2014 IN ARCHITECTURE

Follow

Like 1

Pin it

Tweet 3

+1 0

TAGS

ADAPTIVE REUSE

ARCHITECTURE

COLORLED GLASS PANELS

CORTEN STEEL SKIN

LONGEVITY RECYCLING

REDEVELOPMENT

SIMPLICITY SUNSCREEN

SUSTAINABLE DEVELOPMENT

UNIFORMITY



This project aspires to be an example of how the recycling of existing structures can potentially serve as a vehicle for a sustainable development of our built environment. The challenges of demonstrating how adaptive reuse could be seen as a new model for redevelopment was intertwined with the challenges of a designer also working as the builder with an extremely limited budget and time for the execution of this project.

RELATED POSTS

- Mirrors by bandesign
- YME universe by Snøhetta
- A sculpted space and a sophisticated exercise in building science: Grotto Sauna
- E.Lederc Shopping Mall by Atelier REC

SHARE THIS



FOLLOW



SUBSCRIBE TO INSPIRATIONIST

Email

Subscribe

TAGS

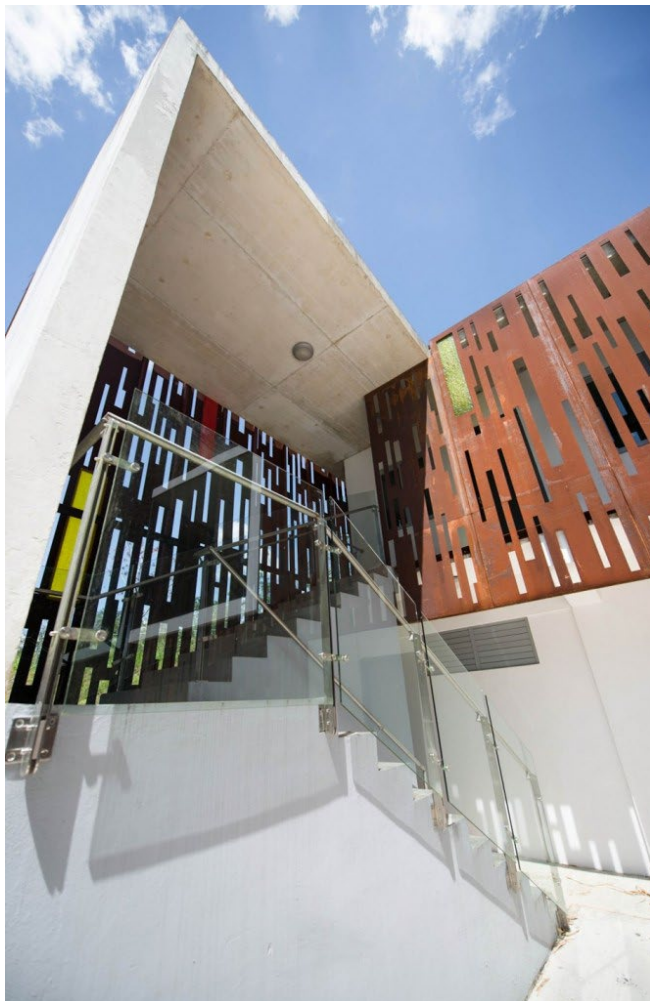
accessories
architecture art
 BLACK black and white CGI collection
 concrete craftsmanship **Design**
 exhibition **Fashion** flexibility
 furniture geometry glass graphic
 HOTEL installation **interior**
interior design jewelry
 leather light london made in ro
 minimalist minimalist design modern
 movie **music** natural light pavilion
 PHOTOGRAPHY product
product design
 renovation residential restaurant
 sculpture TRANSPORTATION
 triangulation white wood wood
 facade

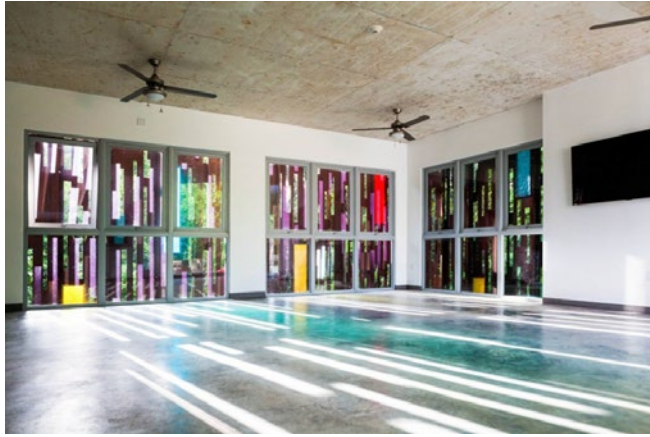


GELM Annex is a second commission of the joint Early Head Start and Pre-School Program of Guarderia Ecologica La Mina (GELM). The design solution for the rehabilitation of this existing structure dating back to the 1960's and abandoned since the 1980's had to strive for simplicity, uniformity and longevity. To this effect a corten steel skin perforated in a pattern derived from the abundant and extensive bamboo hedges that surround the site was designed in an effort to establish a dialogue with the immediate natural context. The skin becomes a sunscreen and jointly with the colored glass panels, introduced in reference to the existing pre-school the building serves, help bathe the interior space with filtered and colored light.











Info and images © [Victor Díaz Paunetto](#)



[Bio](#) [Latest Posts](#)

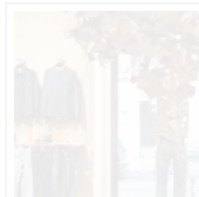


Co-founder at Inspirationist

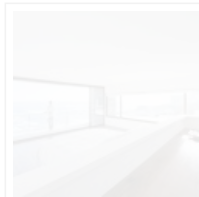
TEODORA is an architect and sociologist. She's into minimalism and travel. She believes learning something new everyday keeps your mind permanently young.



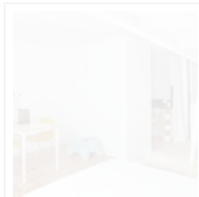
AS



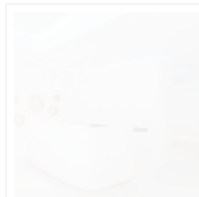
Repair- Recycle- Reuse: Ephemeral



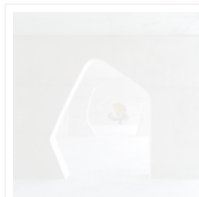
Catch The Views House by LAND



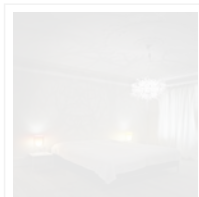
SALVA46 by Miel Arquitectos



Dental Angels by YLAB Arquitectos



Braamcamp Freire School by CVDB



Forms in Nature by Hilden & Díaz

LEAVE A REPLY

Your email address will not be published. Required fields are marked *

Name *

Email *

Website

Comment

You may use these HTML tags and attributes: <abbr title=""> <acronym title=""> <blockquote cite=""> <cite> <code> <del datetime=""> <i> <q cite=""> <strike>

SUBMIT COMMENT

Add me to newsletter list

- » [About Us](#)
- » [Advertise on Inspirationist](#)
- » [Contact Us](#)
- » [Copyright](#)
- » [Disclaimer](#)
- » [Privacy Policy](#)
- » [Terms and Conditions](#)